

Kyoto City Internal Inundation Hazard Map

Kamigyo and Nakagyo Wards



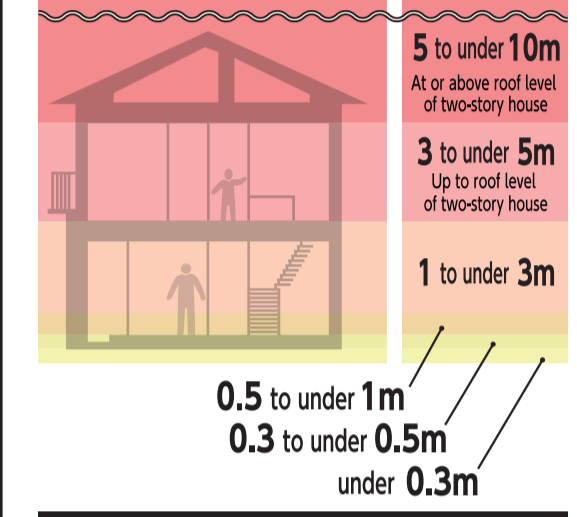
This map shows the conditions including the expected flood depth in the event of sewer overflow caused by the assumed maximum rainfall as defined under the Flood Control Act.

※ Assumed maximum rainfall (147 mm per hour)

Map Key

Area Expected to Flood Due to Predicted Max. Flooding Level

Set the floor height at 0.5 m above ground level



Areas Requiring Early Evacuation Due to River Flooding

(Area where building collapse is expected)

- Area where all buildings expected to collapse
- Area where wooden buildings houses expected to collapse
- Area where the combined effects of both factors: Area where building collapse is expected

Landslide Hazard Areas

- Landslide hazard area
- Higher-risk landslide hazard area

Underpass

Low-Lying Passage Prone to Flooding

- Shrines, Temples, and Disaster Prevention Facilities
- Administrative Wards
- JR
- Private Railway
- Subway line
- Underground Shopping Street
- River, pond, etc.
- Water Level Station (Including Standard Gauges)
- River Camera
- Crisis Management Water Level Gauge

Designated Emergency Evacuation Site

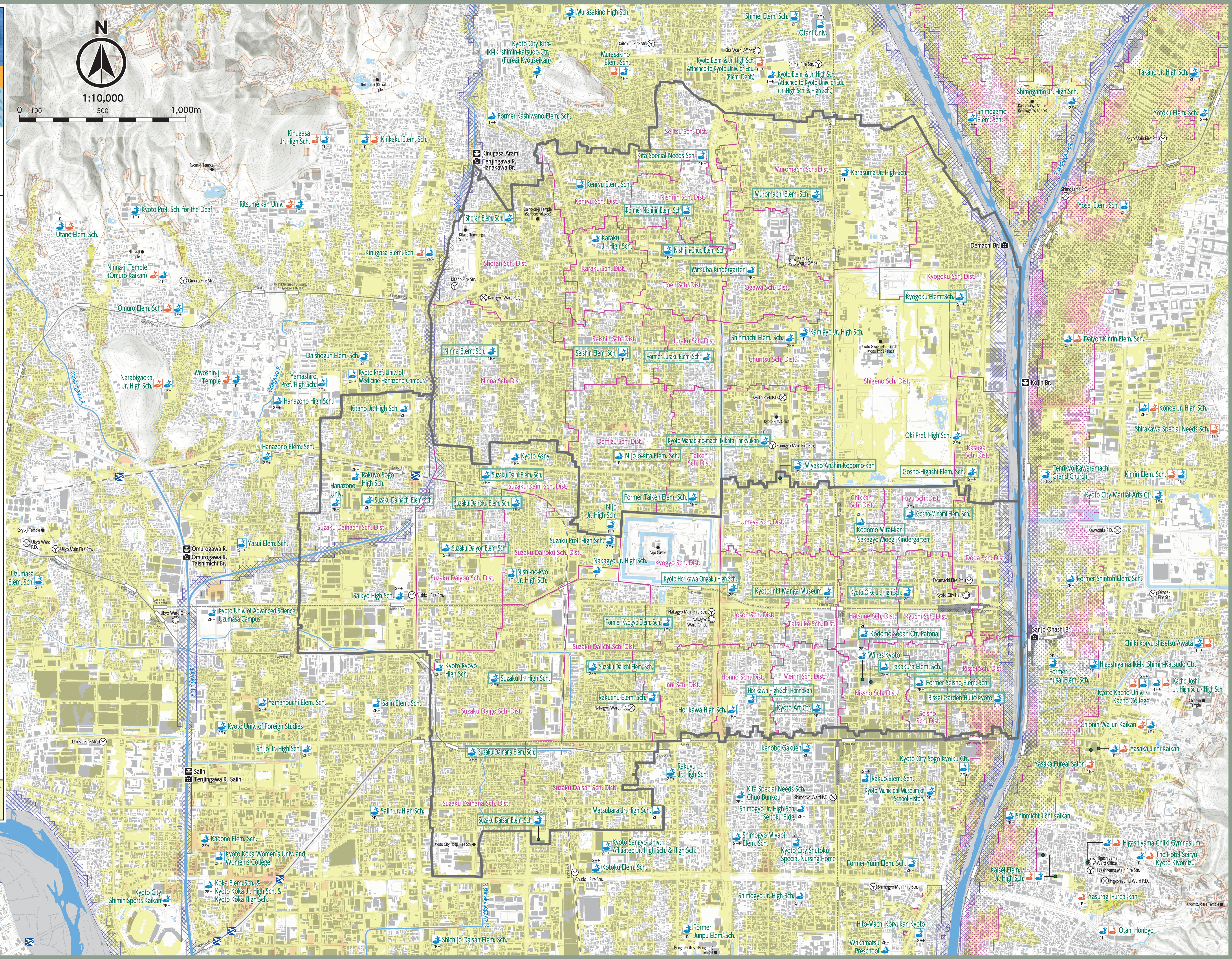
- Designated emergency evacuation site for flood disasters
- Designated emergency evacuation site for landslide disasters
- Designated emergency evacuation site for both floods and landslide disasters

- Floors Designated for Use Even in a Maximum Flooding Event
- At the scale floors are indicated considering the possibility of simultaneous flood inundation.

Disaster Prevention Base

- City Office
- Fire Department
- Police Department

When evacuation information is issued, designated flood evacuation shelters will be opened first. These shelters are marked with a box on the map.



Katsuragawa Elem. Sch. 2F+

Shimino Sports Kaikan 2F+

Kyoto City Shimin Sports Kaikan 2F+

Kyoto Koka Women's Univ. and Women's College 2F+

Kyoto Koka Jr. High Sch. & Kyoto Koka High Sch. 2F+

Kyoto Univ. of Foreign Studies 2F+

Shijo Jr. High Sch. 2F+

Sainin Jr. High Sch. 2F+

Sainin Jr. High Sch. 2F+

Suzaku Dainana Elem. Sch. 2F+

Suzaku Daisan Elem. Sch. 2F+

Suzaku Daisan Sch. Dist. 2F+

Matsubara Jr. High Sch. 2F+

Kyoto Sangyo Univ. Affiliated Jr. High Sch. & High Sch. 2F+

Kotoku Elem. Sch. 2F+

Shichijo Daisan Elem. Sch. 2F+

Former Junpu Elem. Sch. 1F+

Shimogyo Jr. High Sch. 2F+

Shimogyo Miyabi Elem. Sch. 2F+

Kyoto City Shutoku Special Nursing Home 2F+

Former Yurin Elem. Sch. 2F+

Wakamatsu Preschool 2F+

Hito-Machi Koryukan Kyoto 2F+

Yasaka Fureai Salon 1F+

Yasaka Jichi Kaikan 1F+

Chionin Wajun Kaikan 1F+

Kyoto Kacho Univ. / Kacho College 1F+

Kyoto City Martial Arts Ctr. 1F+

Tenrikyo Kawaramachi Grand Church 1F+

Kinrin Elem. Sch. 1F+

Shirakawa Special Needs Sch. 1F+

Konoe Jr. High Sch. 2F+

Kasuga Sch. Dist. 2F+

Gosho-Higashi Elem. Sch. 2F+

Gosho-Minami Elem. Sch. 2F+

Kodomo Mirai-kan Nakagyo Moegi Kindergarten 2F+

Chikkan Sch. Dist. 2F+

Fuyui Sch. Dist. 2F+

Kyogoku Sch. Dist. 2F+

Shinmichi Jichi Kaikan 1F+

Kaisei Elem. / Jr. High Sch. 1F+

Higashiyama Chikii Gymnasium 1F+

The Hotel Seiryu Kyoto Kiyomizu 1F+

Yasuragi Fureai-kan 1F+

Otani Honryo 1F+